

## TOY REINS.

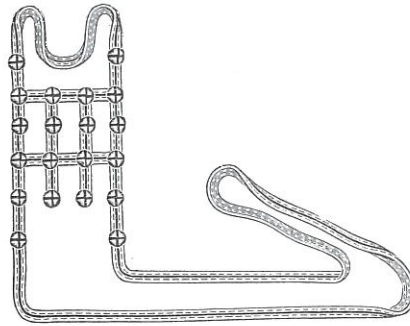


Fig. 104.

## WHITE AND RED ENAMELED REINS.

No. 606.	16,	$\frac{7}{8}$ -inch	Nickeled	Steel	Bells.
No. 608.	16,	1	"	"	"
No. 610.	20,	$\frac{7}{8}$	"	"	"
No. 612.	20,	1	"	"	"
No. 614.	24,	$\frac{7}{8}$	"	"	"
No. 616.	24,	1	"	"	"

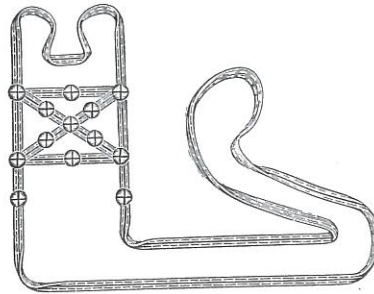


Fig. 105.

## RED AND WHITE ENAMELED REINS.

No. 618.	13,	$\frac{7}{8}$ -inch	Nickeled	Steel	Bells.
No. 620.	13,	1	"	"	"
No. 622.	17,	$\frac{7}{8}$	"	"	"
No. 624.	17,	1	"	"	"
No. 626.	21,	$\frac{7}{8}$	"	"	"
No. 628.	21,	1	"	"	"

TOY REINS.

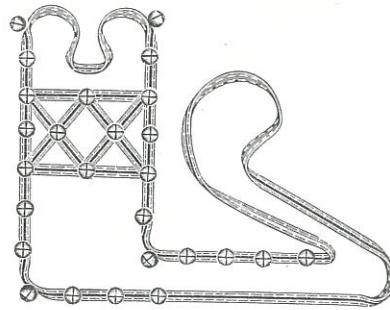


Fig. 106.

RED AND WHITE ENAMELED REINS.

No. 630.	14,	$\frac{7}{8}$ -inch	Nickeled	Steel	Bells.
No. 632.	14,	1	"	"	"
No. 634.	20,	$\frac{7}{8}$	"	"	"
No. 636.	20,	1	"	"	"
No. 638.	26,	$\frac{7}{8}$	"	"	"
No. 640.	26,	1	"	"	"

GENUINE LEATHER TOY REINS.

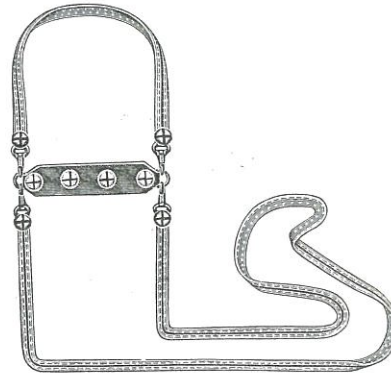


Fig. 107.

LEATHER FRONT.

RED AND WHITE ENAMELED REINS.

2 Rings, 4 Snaps.

No. 642.	4,	1-inch	Bells	and	4,	$\frac{7}{8}$ -inch	Bells.
No. 644.	4,	1	"	"	8,	$\frac{7}{8}$	"
No. 646.	4,	1	"	"	16,	$\frac{7}{8}$	"

5.



LED REINS.

led	Steel	Bells.
"	"	"
"	"	"
"	"	"
"	"	"
"	"	"



LED REINS.

led	Steel	Bells.
"	"	"
"	"	"
"	"	"
"	"	"

**TOY REINS.**  
**GENUINE LEATHER.**

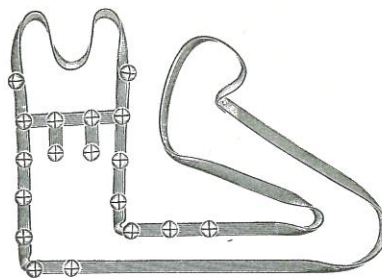


Fig. 108

No. 648, 6, 1-inch Nickered Steel Bells.  
No. 650, 6, 1 " and 12,  $\frac{7}{8}$ -inch Steel Bells.

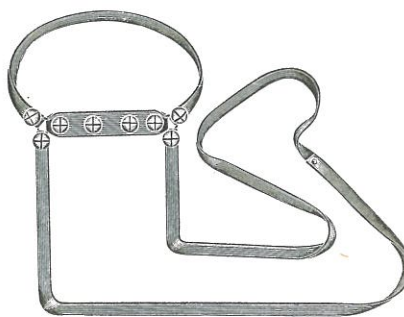


Fig. 109

**ALL LEATHER, TWO RINGS.**

No. 652, 4, 1-inch Nickered Steel Bells.  
No. 654, 4, 1 " and 4,  $\frac{7}{8}$  inch Nickered Steel Bells.

ER.



Steel Bells.  
3/8-inch Steel Bells.



RINGS.  
Steel Bells.  
1-inch Nickered Steel Bells.

**TOY REINS.**  
**GENUINE LEATHER.**

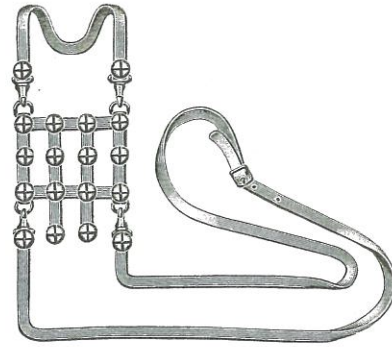


Fig. 110

**ALL LEATHER, FOUR RINGS, FOUR SNAPS.**  
No. 656, 16, 7/8-inch Nickered Steel Bells.  
No. 658, 18, 7/8 " " " "

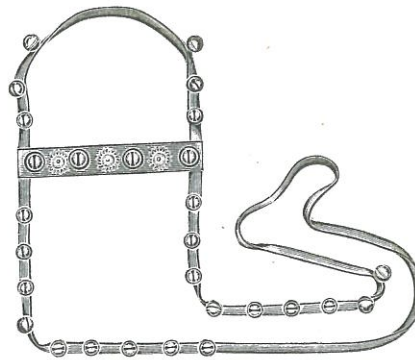


Fig. 111.

**ALL LEATHER REINS**  
**WITH ORNAMENTAL FRONT.**  
No. 660. 29, Nickered Steel Bells.  
4, 1-inch, 22, 7/8 inch and 3, 3/4 inch.

## TOY REINS.

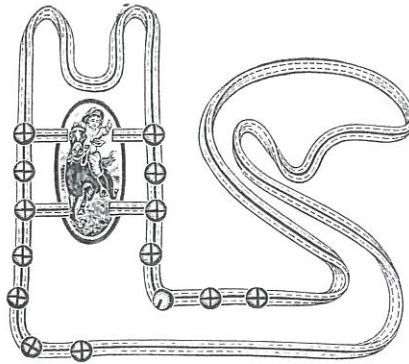


Fig. 112.

RED AND WHITE ENAMELED REINS.  
SHIELD LITHOGRAPHED IN COLORS  
"THE G. B. BOY."

No. 662.	4,	$\frac{7}{8}$ -inch	Nickeled	Steel	Bells.
No. 664.	4,	1	"	"	"
No. 666.	12,	1	"	"	"
No. 668.	18,	1	"	"	"
No. 670.	24,	1	"	"	"
No. 672.	36,	$\frac{7}{8}$	"	"	"

## JUMP ROPES.

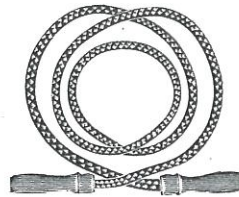


Fig. 113.

RED AND WHITE HEAVY BRAIDED CORD.  
LARGE ENAMELED HANDLES.

No. 676.

REVOLVING CHIMES.

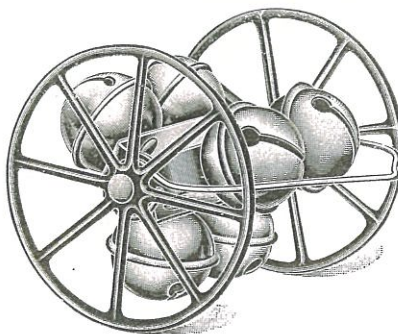


Fig. 114.

(Half Size)

ORNAMENTAL WHEELS.

No. 1000.	6,	$\frac{7}{8}$ -inch	Nickeled Steel Bells.
No. 1002.	8,	$\frac{7}{8}$	“ “ “ “
No. 1004.	6, 1	“	“ “ “ “
No. 1006.	8, 1	“	“ “ “ “

REVOLVING CHIMES.

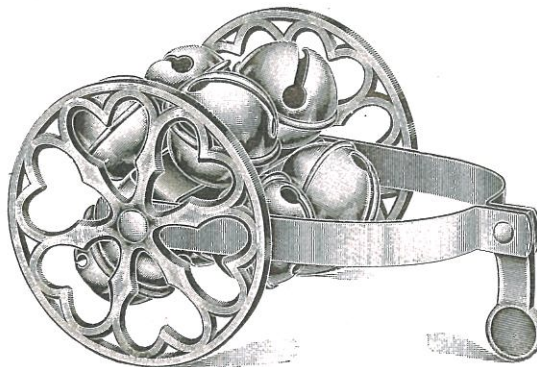


Fig. 115.

(Half Size)

ORNAMENTAL WHEELS.

No. 1008.	6,	$\frac{7}{8}$ -inch	Nickeled Steel Bells.
No. 1010.	8,	$\frac{7}{8}$	“ “ “ “
No. 1012.	6, 1	“	“ “ “ “
No. 1014.	8, 1	“	“ “ “ “



LED REINS.  
 IN COLORS  
 led Steel Bells.  
 “ “  
 “ “  
 “ “  
 “ “

AIDED CORD.  
 HANDLES.

## REVOLVING CHIMES WITH HORSES.

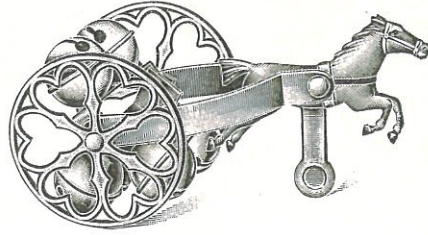


Fig. 116.

## ORNAMENTED IN COLORS.

No. 1015.	3,	1-inch	Nickeled	Steel	Bells.
No. 1016.	6,	$\frac{7}{8}$	"	"	"
No. 1018.	8,	$\frac{7}{8}$	"	"	"
No. 1020.	6,	1	"	"	"
No. 1022.	8,	1	"	"	"

## REVOLVING CHIMES.

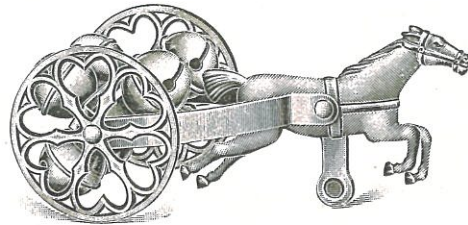


Fig. 117.

## ORNAMENTED IN COLORS.

No. 1024.	6,	$\frac{7}{8}$ -inch	Nickeled	Steel	Bells.
No. 1026.	8,	$\frac{7}{8}$	"	"	"
No. 1028.	6,	1	"	"	"
No. 1030.	8,	1	"	"	"