

Established 1886

Incorporated 1899

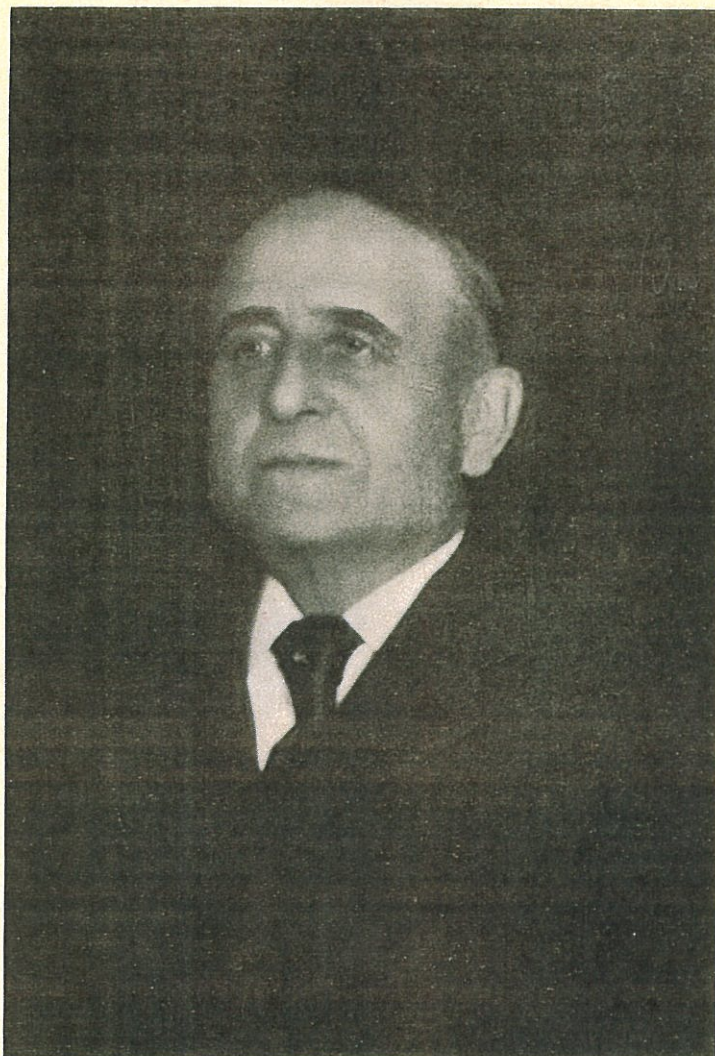
CATALOG T-200

BELLS and BELL TOYS

Reins, Rattles and Novelties



The GONG BELL MANUFACTURING CO.
East Hampton, Conn., U. S. A.



AUGUSTUS H. CONKLIN

Born February 9, 1838

Died July 6, 1912

One of the Organizers and for 46 years General Manager
of The Gong Bell Manufacturing Company

No. T-200

ILLUSTRATED CATALOG
OF

Bells and Bell Toys

Reins, Rattles and Novelties

MANUFACTURED EXPRESSLY FOR THE

Toy and Fancy Goods
Trade

The Gong Bell Manufacturing Co.

EAST HAMPTON, CONN.,

U. S. A.

P Please order by Number.

~~List prices are subject to discount.~~

We make no charge for cases.

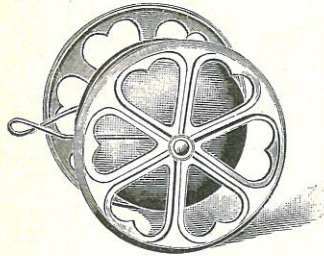
Freight rate to western points is the same
as from New York.

We cannot insure delivery and safe carriage. Our responsibility ceases when shipments are received for in good order by the carriers.

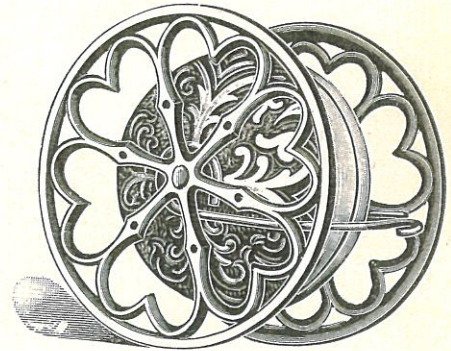
All claims for shortage must be brought
to our notice on receipt of goods.

REVOLVING CHIMES

WITHOUT ANIMAL ATTACHMENTS.



Three-quarter Size Cut. No. 1.



Half Size Cut. No. 13.

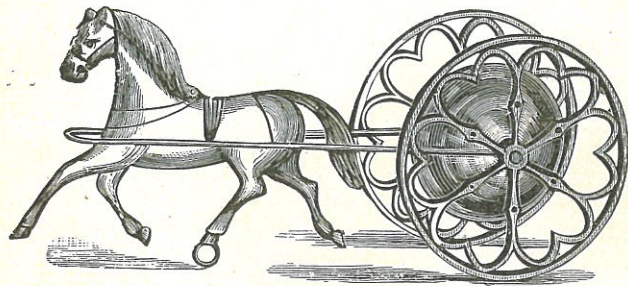
No. 1. Wheels $2\frac{1}{2}$ inches.

Weight per gross, 25 lbs.

No. 13. Wheels $3\frac{1}{2}$ inches.

Weight per gross, 141 lbs.

REVOLVING CHIMES WITH SINGLE HORSES.



Half Size Cut. No. 5. Horse.

No. 5. Wheels $3\frac{5}{8}$ inches.

Weight per gross, 95 lbs.

No. 1 Chime packed One Dozen in a box.

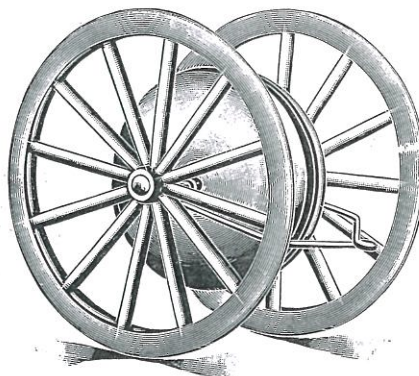
No. 13 Chime packed One-third Dozen in a box.

No. 5 Chime packed One-half Dozen in a box.

discount.
cases.
prints is the same
y and safe car-
ity ceases when
ed for in good

ust be brought
t of goods.

REVOLVING CHIMES
WITH RUBBER TIRED, GILT FINISH WHEELS.



Half Size Cut. No. 17.

No. 17 packed One-half Dozen in paper box.

No. 18 packed One-twelfth Dozen in paper box.

Better bells and much more substantially made than the imported chimes.

No. 17. Wheels $3\frac{5}{8}$ inches diameter. Weight per gross, 72 lbs.

No. 18. Wheels 5 inches diameter. Weight per gross, 162 lbs.

No. 19 $\frac{1}{2}$. Same as No. 17 but without Rubber Tires. Weight per gross, 64 lbs.

No. 20 $\frac{1}{2}$. Same as No. 18, but without Rubber Tires. Weight per gross, 150 lbs.