

403 MOTORCYCLE

Colorful lithographed 7" dia. wheels. Noisemaker in real wheels. Nickel plated tubular steel handle bar with poly tips. Sturdily constructed of wood and steel. Colorful motorcycle design. 14" high — overall length 23". Each is packed in corrugated carton K.D. for easy assembly. Approximate weight 6 lbs.

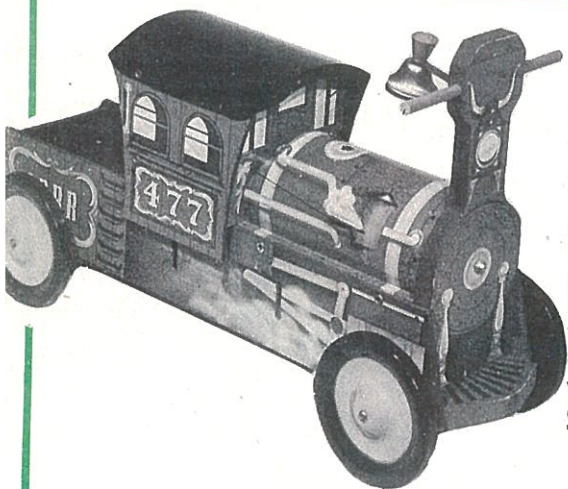
SUGGESTED RETAIL \$4.00



406 Special Delivery Scooter

A motor scooter made of sturdy wood and steel construction. Seat lifts up for carrying space. Bright nickeled handle bar. New design polyethylene wheels 4 1/2" diameter. 15 1/2" high. Overall length 22". Each is packed in corrugated carton K.D. for easy assembly. Approximate weight 5 lbs.

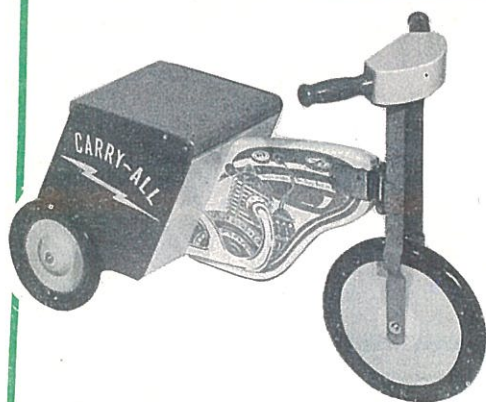
SUGGESTED RETAIL \$4.00



477 LOCOMOTIVE

Large locomotive made of steel and masonite. Colorfully lithographed. Can be used as a rider toy by the young engineer. Bright nickeled bell. Plenty of room in coal car for cargo. 5 1/4" dia. steel wheels. 24" long — 15" high — 8" wide. Each is packed in corrugated carton. Approximate weight 7 lbs.

SUGGESTED RETAIL \$6.00



404 CARRY-ALL MOTOR BIKE

A sturdily constructed bike of wood and hardwood construction. It is beautifully silk screened and brightly enameled. Seat may be raised to carry many items. Enameled steel wheels with a noisemaker in the front wheel. It has wooden handle bars and steers very easily. Overall length 21", height of handle bar 15" — 9" wide. Each is packed in a corrugated carton. Weighs approximately 7 lbs.

SUGGESTED RETAIL \$6.00

THE

GONG BELL

MFG. CO. EST. 1869

(The N. N. Hill Brass Co.)

EAST HAMPTON, CONN.

4
96

1962

CATALOG

TELEPHONES

735 RANCH PHONE

Replica of the old time Western phone. Sturdy metal and hardboard. Turn the crank and ring the nickel plated bells. 13 $\frac{1}{4}$ " high. Each packed in a box. Standard carton of 1 doz. weighs approx. 25 lbs.

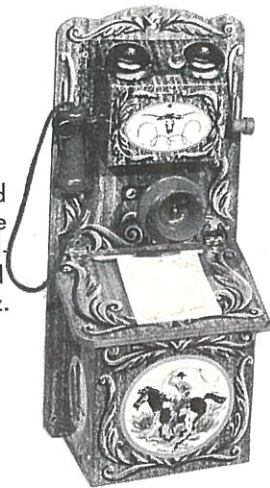
SUGGESTED RETAIL \$3.00



330 COUNTRY PHONE

Turn crank, bells ring. Real pad and pencil on hinged storage cover. Sturdy metal and hardboard. 13 $\frac{1}{4}$ " high. Each boxed Standard carton of 1 doz. weighs about 25 lbs.

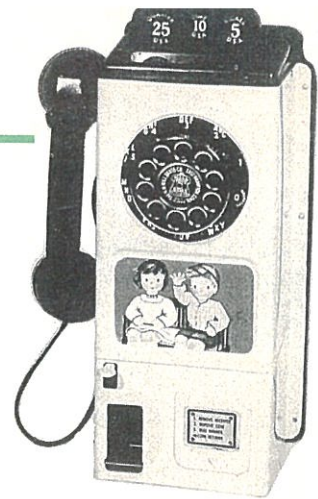
SUGGESTED RETAIL \$3.00



717 JUMBO PAY PHONE

All metal construction. Gong strikes when coins are deposited and coins return. Spring return dial. 13" high, 7" wide, 4" deep. Each packed in a box. Standard carton of 1 doz. weighs approx. 25 lbs.

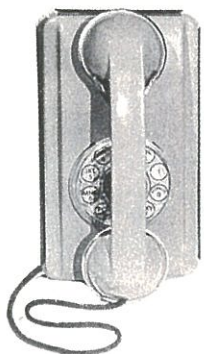
SUGGESTED RETAIL \$2.00



701 PLAY PHONE

Wood and hardboard construction. Gaily colored and silk screened. Spring return dial. Deposit colorful play money, press down receiver holder and "money" returns. Each packed in a box. Standard carton of 1/2 doz. weighs approx. 25 lbs.

SUGGESTED RETAIL \$3.00



0699 WALL PHONE

Sturdy enameled steel construction. Spring return dial rings a concealed bell. Base measures 4 $\frac{1}{4}$ " x 7 $\frac{1}{4}$ ". Each is packed in a box. Standard carton of 2 dozen weighs approximately 21 lbs.

Suggested Retail \$1.00



0686 DIAL PLAPHONE

All metal finished in baked enamel. Spring return dial rings bell. Base enclosed at bottom and measures 4 $\frac{1}{4}$ " x 7". Each packed in a box. Assorted colors. Standard carton of 2 dozen weighs approximately 24 lbs.

Suggested Retail \$1.00



0700 PLA PAY PHONE

All metal construction. Gong strikes when coins are deposited and coins return. Spring return dial. 8 $\frac{1}{2}$ " high — 2 $\frac{1}{2}$ " deep. Each is packed in a box. Standard carton of 1 dozen weighs approximately 15 lbs. Assorted colors.

Suggested Retail \$1.50



305 DIAL PHONE

Colorful baked enamel finish all steel telephone. Clear plastic dial rings concealed bell. Base measures 6 $\frac{1}{4}$ " x 4 $\frac{1}{4}$ ". Assorted colors. Standard carton of 2 dozen weighs approximately 17 lbs.

SUGGESTED RETAIL 89¢

THE GONG BELL MANUFACTURING CO.

(THE N. N. HILL TOY CO.)

East Hampton, Connecticut



1962 PRICE LIST

TERMS

2% 10 Days — Net 30 Days

F.O.B. FACTORY, EAST HAMPTON, CONN.

NEW YORK SALES OFFICE

200 Fifth Avenue

NO.	ITEM	PAGE	COST	STD. PACK	WT. PER PACK
403	MOTORCYCLE	1	21.60 dz.	1 pc, KD	6 lbs.
406	SPECIAL DELIVERY SCOOTER	1	21.60 "	1 " KD	5 "
477	LOCOMOTIVE	1	32.40 "	1 " SU	7 "
404	CARRY ALL MOTOR BIKE	1	32.40 "	1 " KD	7 "
330	COUNTRY PHONE	2	16.20 dz.	1 dz.	25 lbs.
735	RANCH PHONE	2	16.20 "	1 "	25 "
350	PLAY PHONE	2	16.20 "	½ "	25 "
717	JUMBO PAY PHONE	2	16.20 "	1 "	25 "
0699	WALL PHONE	2	5.40 "	2 "	21 "
0686	DIAL PHONE	2	5.40 "	2 "	24 "
0700	PLA PAY PHONE	2	8.10 "	1 "	15 "
305	DIAL PHONE	2	4.80 "	2 "	17 "
311	PERKY PIG BANK PHONE	3	5.40 dz.	2 dz.	9 lbs.
313	DOGGIE BANK PHONE	3	5.40 "	2 "	9 "
317	HONEY BEAR BANK PHONE	3	5.40 "	2 "	9 "
316	PEPPY PANDRO BANK PHONE	3	5.40 "	2 "	9 "
312	KITTEN BANK PHONE	3	5.40 "	2 "	9 "
314	TEDDY BEAR BANK PHONE	3	5.40 "	2 "	9 "
318	BANK PHONE ASSORTMENT	3	5.40 "	2 "	9 "
315	PUSH BUTTON VOICE PHONE	4	10.80 dz.	2 dz.	24 lbs.
320	DUCHESS PHONE	4	5.00 "	2 "	11 "
310	PLAY PHONE	4	5.40 "	2 "	15 "
40	BICYCLE BELL	4	2.25 "	6 "	15 "
751	CALL BELL	4	3.25 "	6 "	20 "
96	ROUND UP BELL	4	13.50 "	½ "	8 "
225	SPINNING BELLS	4	2.15 "	12 "	36 "
99	HAND BELL	4	4.25 "	1 "	4 "
631	MOLDED HEAD HORSE RIDER	5	16.20 dz.	1 pc. KD	4 lbs.
634	HORSE RIDER	5	21.60 "	1 " KD	6 "
632	HORSE RIDER	5	16.20 "	1 " KD	6 "
659	ROCKING HORSE	5	21.60 "	1 " KD	6 "
110	TV STOOL W/BACK REST	5	16.20 "	1 "	4 "
111	STEP STOOL	5	5.40 "	1 dz.	21 "
730	KIDDIE INLAID PUZZLE PLAQUE	6	5.40 dz.	2 dz.	40 lbs.
733	KIDDIE INTERLOCKING PUZZLE	6	5.40 "	2 "	33 "
741	BY THE LETTERS PUZZLE	6	8.10 "	1 "	20 "
742	BY THE NUMBERS PUZZLE	6	8.10 "	1 "	20 "
710	DOUBLE PUZZLE BLOCKS	7	5.40 dz.	2 dz.	25 lbs.
732	INTERLOCKING PUZZLE	7	2.70 "	2 "	26 "
734	INTERLOCKING PUZZLE	7	5.40 "	2 "	38 "
740	CLOCK PUZZLE	7	5.40 "	2 "	25 "
807	FERRY BOAT	8	13.50 dz.	1 dz.	9 lbs.
800	CUM-A-PART MAN	8	16.20 "	1 "	20 "
114	PLA SHOE	8	10.80 "	1 "	19 "
115	POP-A-BALL	8	10.80 "	1 "	12 "
112	SEWING BASKET	8	10.80 "	1 "	16 "
118	KIDDIE WORK BENCH	8	16.20 "	1 "	26 "
113	RAINBOW RINGS	9	5.40 dz.	2 dz.	13 lbs.
117	POUNDING TABLE	9	5.40 "	2 "	26 "
120	BAG O'BLOCKS	9	5.40 "	1 "	25 "
122	BAG O'BLOCKS-PAINTED	9	8.10 "	1 "	26 "
124	WAGON O'BLOCKS	9	10.80 "	1 "	33 "
116	RAINBOW STACKING CART	9	10.80 "	2 "	38 "
802	TAK-A-PART TRAIN	9	16.20 "	1 "	17 "
810	PUSH CHIME	10	5.40 dz.	1 dz.	9 lbs.
923	PUSH CHIME	10	4.80 "	2 "	14 "
352	DOUBLE JANGLE PUSH CHIME	10	6.75 "	1 "	10 "
354	ROLLO CHIME	10	5.40 "	2 "	15 "
353	DOUBLE ROLLER CHIME	10	8.10 "	1 "	9 "
355	CRAZY WHEEL CHIME	10	8.10 "	2 "	24 "
355P	CRAZY WHEEL CHIME	10	5.40 "	2 "	15 "
351	ANIMAL PUSH CHIME ASSORTMENT	11	4.80 dz.	2 dz.	20 lbs.
812	HOBBY RIDER	11	8.10 "	½ "	7 "
814	HOBBY HORSE CHIME	11	5.40 "	1 "	8 "
185	STAND UP CHALK BOARD	12	21.60 dz.	½ dz.	23 lbs.
127	BEGINNERS' CONSTRUCTION BLOCKS	12	16.20 "	¼ "	18 "

NO.	ITEM	PAGE	COST	STD. PACK	WT. PER PACK
202	TUG BOAT SHOO FLY	12	32.40 dz.	1 pc, KD	12 lbs.
200	SHOO FLYER	12	16.20 "	1 " KD	7 "
197	PEG BOARD	12	10.80 "	½ dz.	18 "
198	PEG BOARD	12	16.20 "	½ "	35 "
191	PLAY TABLE DESK RITER	13	21.60 dz.	1 pc. KD	7 lbs.
192	DESK N' SEAT	13	27.00 "	1 " KD	9 "
180	CHALK BOARD	13	5.40 "	2 dz.	26 "
190	CHALK BOARD	13	10.80 "	1 "	39 "
194	CORK BOARD	13	18.90 "	½ "	28"
195	CORK BOARD	13	21.60 "	½ "	28 "
196	DELUXE CORK BOARD	13	27.00 "	½ "	40 "
193	BLACK BOARD CARRYALL	13	10.80 "	1 "	37 "
100	DOLLY CRADLE	14	5.40 dz.	2 dz. KD	42 lbs.
135	SLEEPY TIME CRADLE	14	10.80 "	½ " KD	24 "
135B	SLEEPY TIME CRADLE	14	12.15 "	½ " KD	26 "
101	CRADLE	14	32.40 "	1 pc. KD	7 "
101M	CRADLE W/MATTRESS	14	37.80 "	1 " KD	8 "
145	DROP SIDE CRIB	15	27.00 dz.	1 pc. KD	7 lbs.
145M	DROP SIDE CRIB W/MATTRESS	15	32.40 "	1 " KD	8 "
149	CANOPY BED	15	32.40 "	1 " KD	7 "
149M	CANOPY BED W/MATTRESS	15	37.80 "	1 " KD	8 "
149MB	CANOPY BED W/MAT. & BUMPER	15	43.20 "	1 " KD	8 "
148	DOLLY BUNK BEDS	15	40.50 "	1 " KD	10 "
148M	DOLLY BUNK BEDS W/MATTRESSES	15	51.30 "	1 " KD	11 "
147	DELUXE DROP SIDE CRIB	15	48.60 "	1 " KD	9 "
147M	DELUXE DROP SIDE CRIB W/MAT.	15	54.00 "	1 " KD	10 "
147MB	DELUXE CRIB W/MAT. & BUMPER	15	60.00 "	1 " KD	10 "
153	DELUXE DOLL BED	16	54.00 dz.	1 pc. KD	9 lbs.
153M	DELUXE DOLL BED W/MATTRESS	16	59.40 "	1 " KD	10 "
153MB	DELUXE DOLL BED W/MAT.&BUMPER	16	64.80 "	1 " KD	11 "
900	COLONIAL SETTEE	16	86.40 "	1 " SU	10 "
901	COLONIAL ROCKER	16	43.20 "	1 " SU	6 "
154	LITTLE LADY VANITY & CHAIR	17	54.00 dz.	1 pc. KD	13 lbs.
155	DESK & CHAIR	17	48.60 "	1 " KD	13 "
161	TOY CHEST	17	64.80 "	1 " KD	23 "
141	TOY PEN	18	10.80 dz.	½ dz. KD	20 lbs.
150	CIRCUS WAGON TOYKEEPER	18	27.00 "	1 pc. KD	7 "
144	DROP SIDE CRIB W/DRAWER	18	16.20 "	½ dz. KD	33 "
143	DROP SIDE CRIB	18	10.80 "	½ " KD	25 "
146	DROP SIDE CRIB	18	32.40 "	1 pc. KD	8 "
146M	DROP SIDE CRIB W/MATTRESS	18	37.80 "	1 " KD	9 "
030	BIG FIGHTIN' FISH	19	16.20 dz.	½ dz.	10 lbs.
020	SMARTY PUP	19	5.40 "	1 "	7 "
921	DOODLE DUCK	19	10.80 "	1 "	10 "
922	HUNTER HOUND	19	10.80 "	1 "	12 "
126	WAGON WALKER	19	21.60 "	½ "	26 "
803	ZOO TRUCK	20	10.80 dz.	1 dz.	27 lbs.
804	MAIL TRUCK	20	10.80 "	1 "	26 "
806	BLOCK TRUCK	20	10.80 "	1 "	24 "
805	MILK TRUCK	20	10.80 "	1 "	27 "
808	TRUCK ASSORTMENT	20	10.80 "	1 "	24 "
801	TAK-A-PART TOTE TRUCK	20	21.60 "	1 "	25 "
405	RO TO MO, JR.	*	5.40 dz.	1 dz.	12 lbs.
412	REEL MOWER	*	5.40 "	1 "	12 "
410	LAWN MOWER	*	10.80 "	1 "	16 "
505	RO TO MO	*	10.80 "	½ "	12 "
411	FLYING GRASS MOWER	*	16.20 "	½ "	11 "
460	LAWN MOWER	*	13.50 "	½ "	13 "
425	POWER MOWER	*	16.20 "	½ "	13 "
1000	SHADY SAND BOX	*	5.50 ea.	1 ea. KD	25 lbs.
1010	SHADY SAND BOX	*	6.75 "	1 " KD	31 "
1436	KIDDIE PICNIC TABLE	*	4.50 "	1 " KD	19 "
1230	SWIMMING POOL LADDER	*	8.00 "	1 " KD	26 "
1236	SWIMMING POOL LADDER	*	9.00 "	1 " KD	28 "
1242	SWIMMING POOL LADDER	*	10.00 "	1 " KD	29 "
1248	SWIMMING POOL LADDER	*	12.00 "	1 " KD	31 "

* See Supplement