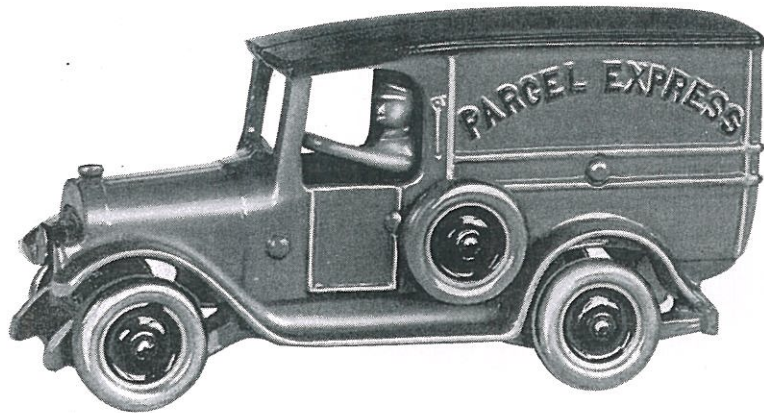


Police Patrol

An up-to-date Police Patrol, finished in bright blue with red and gilt trimmings, black enameled top, balloon type disc wheels with spare wheel all red centered, nickel-plated finish.

IRON TOY

Number	Length	Height	Packed per Box	Doz. per Case	Wt. per Case
686	8¼"	4"	1	1	38 lbs.



IRON TOY Parcel Express

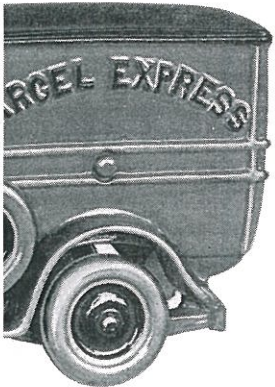
Made up in assorted colors with red and gilt trimmings, black enameled top, balloon type nickel-plated disc wheels, extra spare wheel, red centered.

Number	Length	Height	Packed per Box	Doz. per Case	Wt. per Case
615	8"	4"	1	1	35 lbs.



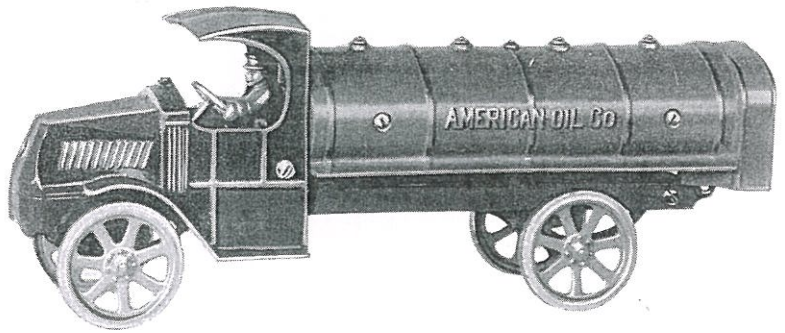
1
 t blue with red and gilt trim-
 wheels with spare wheel all red

Box	Doz. per Case	Wt. per Case
	1	38 lbs.



SS
 trimmings, black enameled top,
 e wheel, red centered.

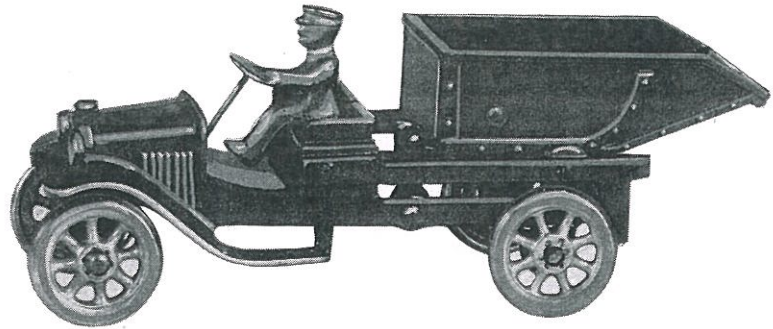
Box	Doz. per Case	Wt. per Case
	1	35 lbs.



IRON TOYS
Mack Tank Truck

Finished in bright colors with bronze trimmings; hood black enamel finish. Number 278 equipped with spoke wheel aluminum painted solid tires. Number 636, with burnished nickel-plated disc wheels with red centers.

Number	Length	Height	Packed per Box	Doz. per Case	Wt. per Case
278	15½"	6¼"	1	1	92 lbs.
636	10¾"	4¾"	1	1	22 lbs.



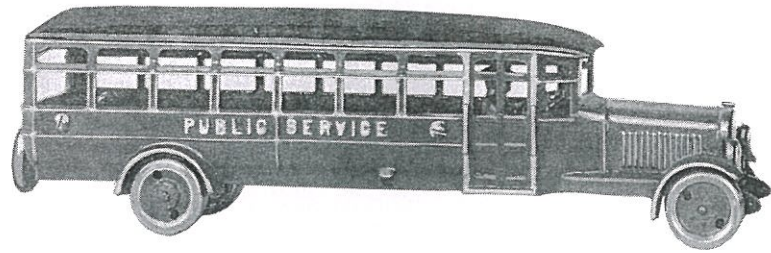
IRON TOYS
Dump Truck

Painted in bright red with bronze trimmings, dump body, nickel-plated wheels.

Number	Length	Height	Packed per Box	Doz. per Case	Wt. per Case
637	8¼"	3¼"	1	3	68 lbs.

Mack design with long hinged dump body finished in bright red with nickel-plated disc wheels. A very snappy number.

Number	Length	Height	Packed per Box	Doz. per Case	Wt. per Case
694	6"	2¾"	6	6	56 lbs.

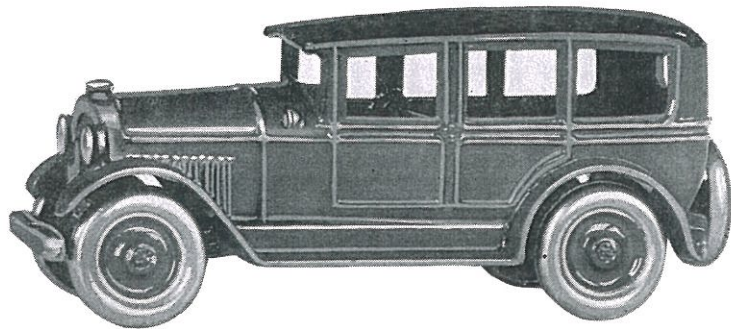


Public Service Bus

An up-to-date model of the city bus, painted in attractive colors, with gilt trimmings, enameled black top, nickel-plated red-centered disc wheels, dual type spare wheel attached to rear.

IRON TOY

Number	Length	Height	Packed per Box	Doz. per Case	Wt. per Case
671	14 $\frac{3}{4}$ "	4 $\frac{1}{4}$ "	1	1	66 lbs.



Sedan

The 669 Sedan is finished in bright colors, attractively decorated; black enamel top; wheels are burnished nickel-plated with red centers, and spare wheel. The Number 632 and number 667 made up in colors with steel nickel-plated wheels assorted in a box.

IRON TOYS

Number	Length	Height	Packed per Box	Doz. per Case	Wt. per Case
669	7 $\frac{1}{2}$ "	3 $\frac{3}{8}$ "	1	3	63 lbs.
632	5 $\frac{1}{2}$ "	2 $\frac{3}{4}$ "	6	6	70 lbs.
667	4 $\frac{3}{4}$ "	2 $\frac{1}{8}$ "	12	12	84 lbs.

Number 1667, polished aluminum, same size as number 667; packed 12 in a box; 6 dozen per case; weight per case, 23 lbs.

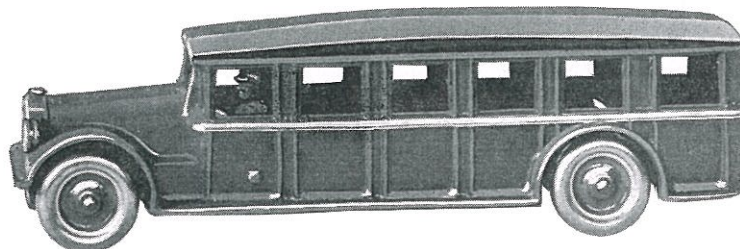
Made of cast aluminum, highly polished, with red centered disc wheels.



Twin Motor Coach

An exact reproduction of a twin-motor coach, finished in bright colors with bronze trimmings; top, black enameled; nickel-plated disc wheels, red centered.

Number	Length	Height	Packed per Box	Doz. per Case	Wt. per Case
648	10"	3 1/8"	1	1	36 lbs.



Interurban Bus

Finished in bright assorted colors with bronze trimmings, black enameled top, burnished nickel-plated disc wheels with red centers. **IRON TOYS**

Number	Length	Height	Packed per Box	Doz. per Case	Wt. per Case
612	10 3/4"	3"	1	1	37 lbs.
670	9"	3 1/2"	1	1	28 lbs.

Made up in bright assorted colors. Number 621, bronze trimmings, all equipped with bright nickel-plated steel wheels. **IRON TOYS**

Number	Length	Height	Packed per Box	Doz. per Case	Wt. per Case
621	7 3/4"	2 3/4"	1	3	63 lbs.
620	6 1/4"	3 5/8"	6	6	80 lbs.
683	6"	2 1/8"	6	6	60 lbs.
619	5"	2 1/8"	12	12	88 lbs.

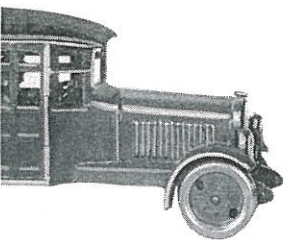
Number 3612, polished aluminum, same size as number 612; packed 1 in a box; 1 dozen per case; weight per case, 22 lbs.

Number 3621, polished aluminum, same size as number 621; packed 1 in a box; 2 dozen per case; weight per case, 22 lbs.

Number 1619, polished aluminum, same size as number 619; packed 12 in a box; 6 dozen per case; weight per case, 23 lbs.

Number 3648, polished aluminum, same size as number 648; packed 1 in a box; 1 dozen per case; weight per case, 18 lbs.

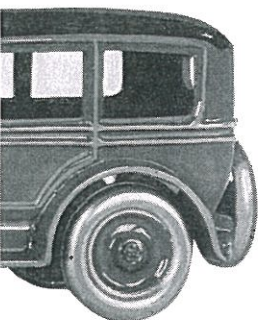
Made of cast aluminum, highly polished, trimmed in red, with disc wheels red centered. These toys are exceedingly light in weight and most attractive in appearance.



Bus

in attractive colors, with gilt red-centered disc wheels, dual

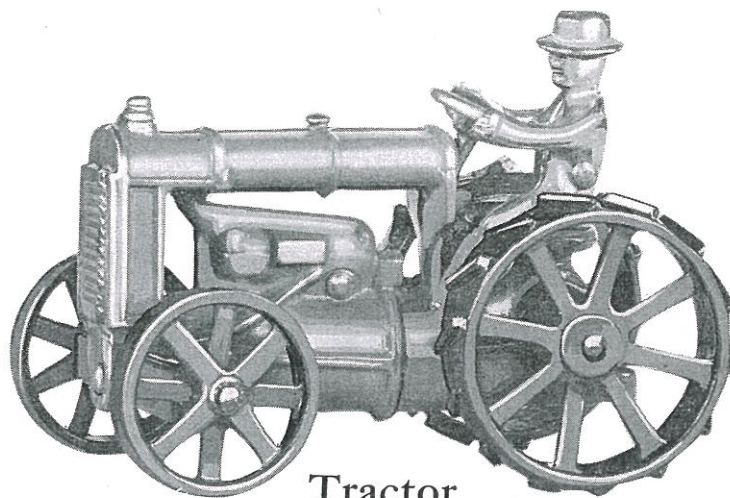
Box	Doz. per Case	Wt. per Case
	1	66 lbs.



actively decorated; black enamel centers, and spare wheel. The wheels with steel nickel-plated wheels

Box	Doz. per Case	Wt. per Case
	3	63 lbs.
	6	70 lbs.
	12	84 lbs.

667; packed 12 in a box; 6 dozen per case; weight per case, 18 lbs.

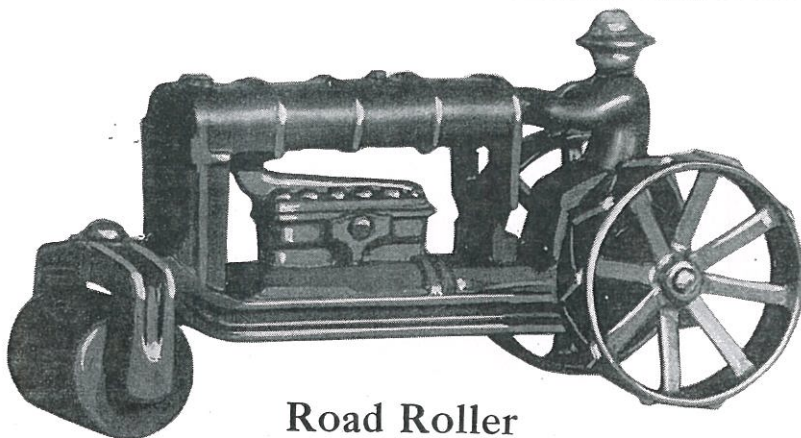


Tractor

Number 622, painted in green and blue assorted, with red wheels, bronze trimmed, with nickel-plated operator and steering wheel. Number 646, green and blue assorted, with bright nickel-plated wheels. Number 638, green and blue assorted in a box, with bright red wheels.

IRON TOYS

Number	Length	Height	Packed per Box	Doz. per Case	Wt. per Case
622	6"	4 $\frac{1}{4}$ "	1	3	75 lbs.
646	5"	3"	6	6	66 lbs.
638	3 $\frac{3}{4}$ "	2 $\frac{5}{8}$ "	12	12	70 lbs.



Road Roller

Number 647, finished in green and blue, with nickel-plated wheels, assorted in a box. Number 645, with red wheels assorted in a box.

IRON TOYS

Number	Length	Height	Packed per Box	Doz. per Case	Wt. per Case
647	6"	3"	6	6	66 lbs.
645	4 $\frac{1}{2}$ "	2 $\frac{5}{8}$ "	12	12	76 lbs.