

ESTABLISHED IN 1889

Catalogue No. 52

THE N. N. HILL BRASS CO.

Bells and Toys



EAST HAMPTON, CONN.

U. S. A.

OFFICE SALESROOM
EMANN, SEABREY &
215-219 FOURTH AVE.
NEW YORK, N. Y.
U. S. A.

PRICES SUBJECT TO CHANGE WITHOUT NOTICE

Illustrated Catalogue

No. 52

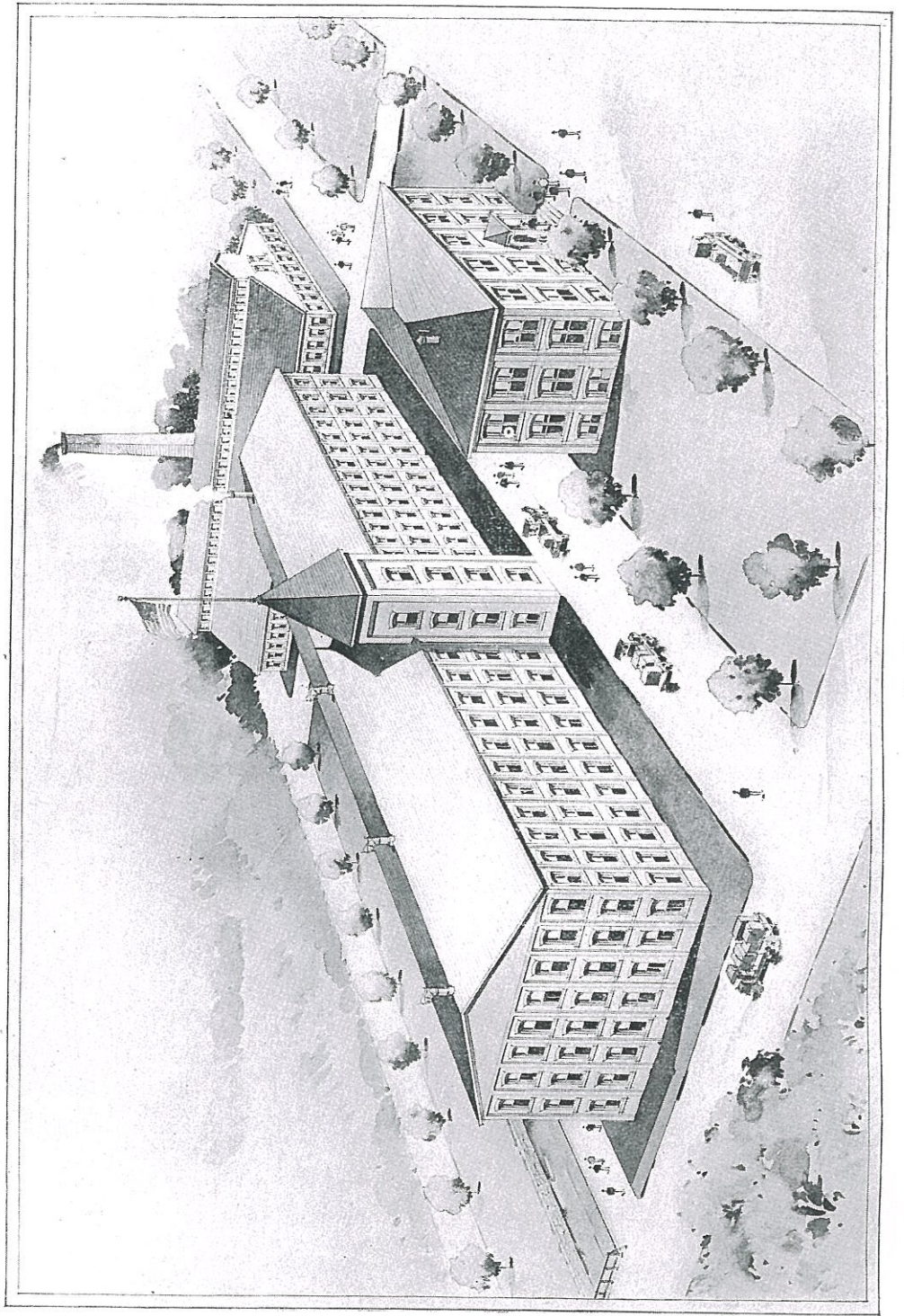
BELLS AND TOYS



TERMS OF SALE

On each and every invoice the terms of payment are plainly stamped and we request a ready compliance with same.

We make no allowance for breakage nor do we guarantee delivery or safe carriage. We do not hold ourselves liable for non-shippments on specified dates.



Nickel Plated Chime Bell Rattles



Cut 101

Black Enameled Handles

No. 103	1½-inch Gong.	Packed 10 gross in case.	Weight, 150 pounds.
“ 104	1¾ “ “	“ 10 “ “	“ 190 “
“ 121	2¼ “ “	“ 5 “ “	“ 180 “

Nickel Plated Dumb Bell Rattles

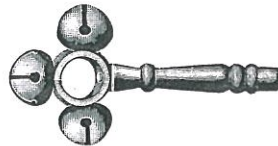


Cut 104

Black Enameled Handles

		Length of Handle, 2½ inches.	
No..107	1¾-inch Gongs.	Packed 5 gross in case.	Weight, 175 pounds.
		Length of Handle, 3½ inches.	
No. 107½	1¾-inch Gongs.	Packed 5 gross in case.	Weight, 185 pounds.

Cold Rolled Steel Sleigh Bell Rattles



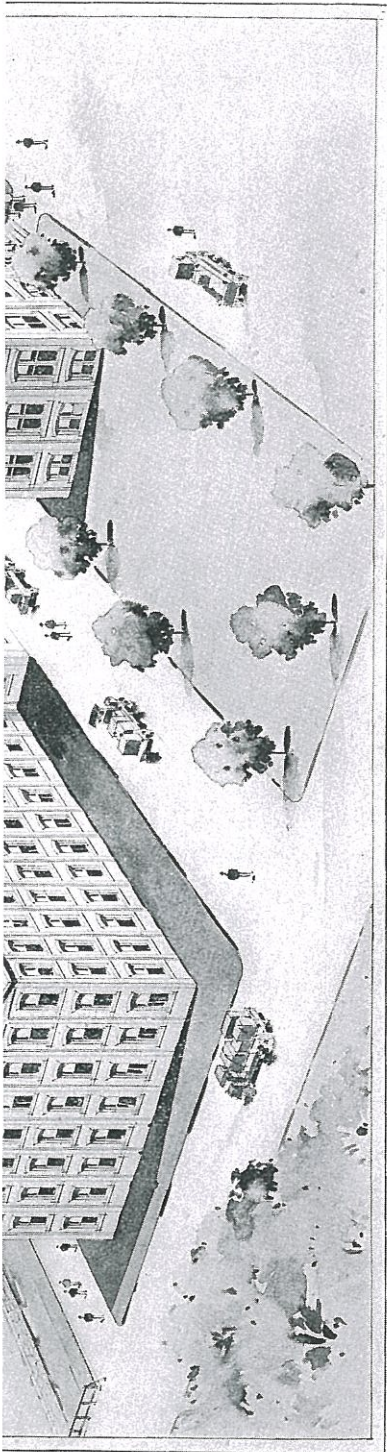
Cut 382

White Enamel Bound Straps

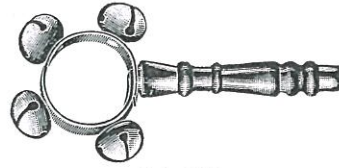
Black Enameled Handles

No. 105	3, ¾-inch Bells.	Packed 10 gross in case.	Weight, 180 pounds.
“ 113	3, ⅞ “ “	“ 10 “ “	“ 200 “
“ 118	3, 1 “ “	“ 5 “ “	“ 120 “
“ 115	3, 1⅞ “ “	“ 5 “ “	“ 135 “

Cut 00



Cold Rolled Steel Sleigh Bell Rattles



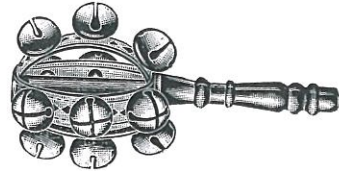
Cut 428

White Enamel Bound Straps

Black Enameled Handles

No. 110	4,	$\frac{3}{4}$ -inch	Bells.	Packed	10	gross	in case.	Weight,	200	pounds.
" 114	4,	$\frac{7}{8}$	" "	"	10	"	"	"	220	"
" 119	4,	1	" "	"	5	"	"	"	140	"
" 116	4,	$1\frac{1}{8}$	" "	"	5	"	"	"	150	"

Cold Rolled Steel Sleigh Bell Rattles



Cut 429

White Enamel Bound Straps

Black Enameled Handles

No. 122	8,	$\frac{3}{4}$ -inch	Bells.	Packed	1	gross	in case.	Weight,	70	pounds.
" 123	12,	$\frac{3}{4}$	" "	"	1	"	"	"	80	"
" 133	8,	$\frac{7}{8}$	" "	"	1	"	"	"	80	"
" 130	12,	$\frac{7}{8}$	" "	"	1	"	"	"	90	"