

SET AND
The Biggest
Wheel Derby
and!

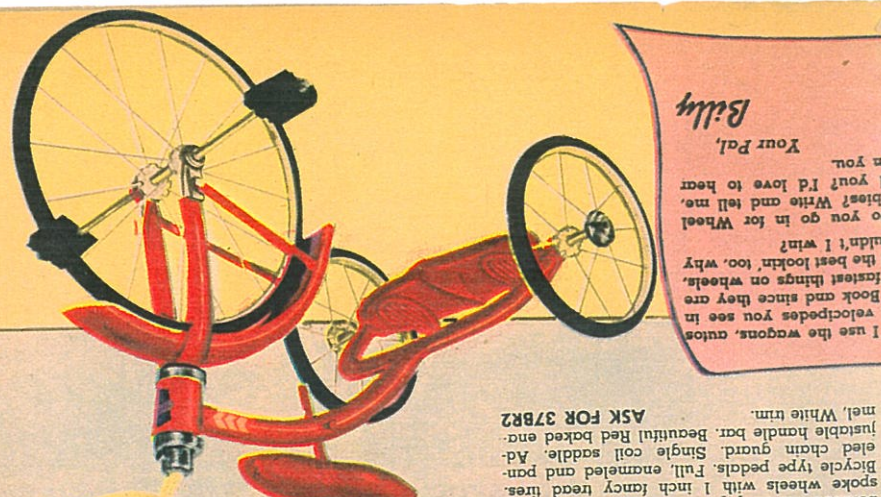


CHAIN DRIVEN TRICYCLE...

"Happy days ahead for you, with this Chain Driven Tricycle," says Billy and Ruth. "All the kids in your neighborhood will envy you. It has 16 in. machine spoke wheels with 1 inch fancy tread tires. Bicycle type pedals. Full, enameled and painted chain guard. Single coil saddle and padded handle bar. Beautiful Red baked enamel. White trim.

ASK FOR 37BR2

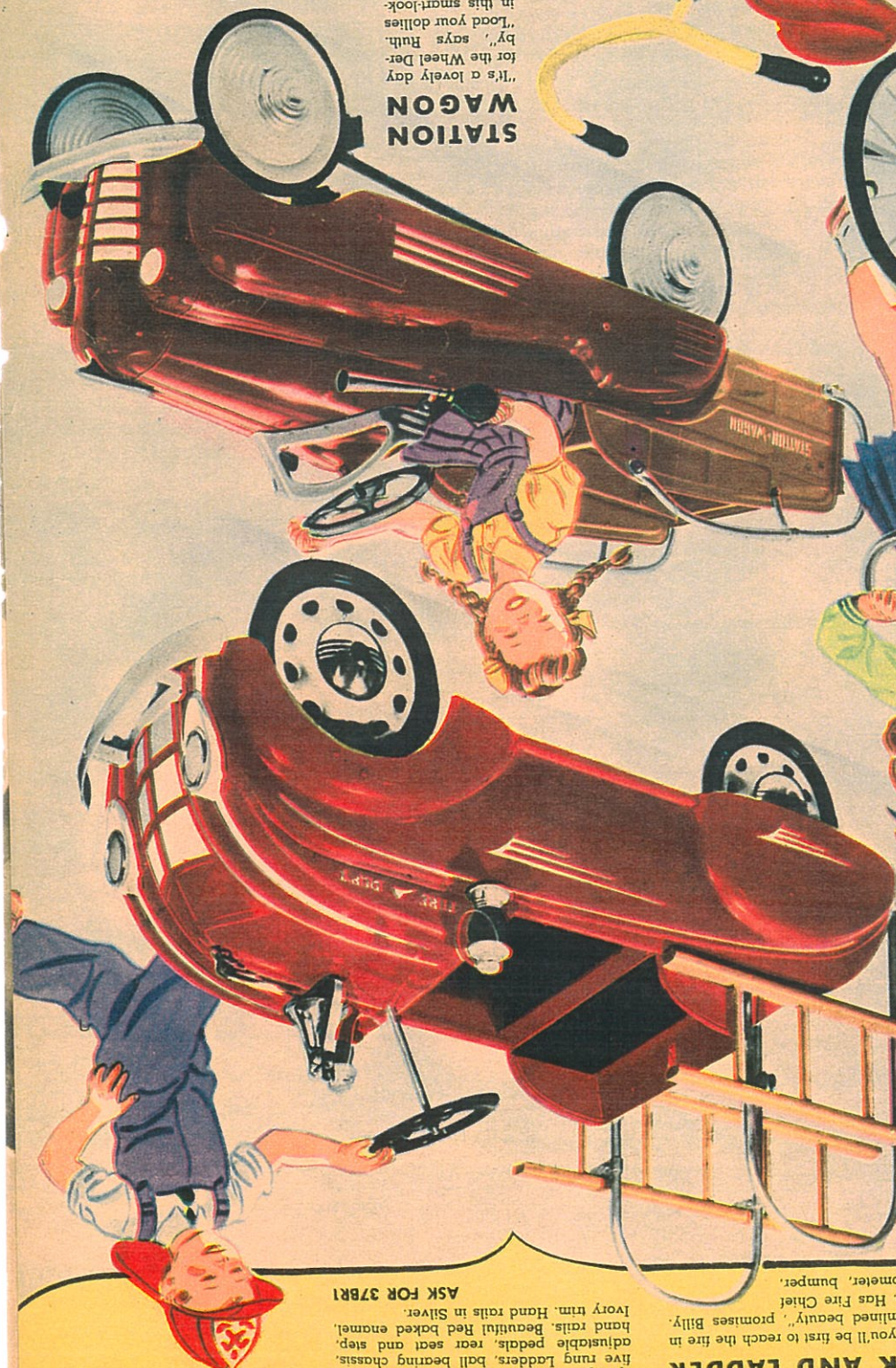
Billy
 Your Pal,
 Do you go in for Wheel Derby? Write and tell me, I'll tell you? I'd love to hear from you.



STATION WAGON

"It's a lovely day for the Wheel Derby," says Ruth. "Load your dollies in this smart-looking Station Wagon and off you go. Boy, you sure can travel in style in this. Body and chassis in Maroon baked enamel with Ivory trim. Box in Hazelwood Brown, wheels in Ivory and Hand Rails and Bumper in Silver.

ASK FOR 37BR3



HOOK AND LADDER

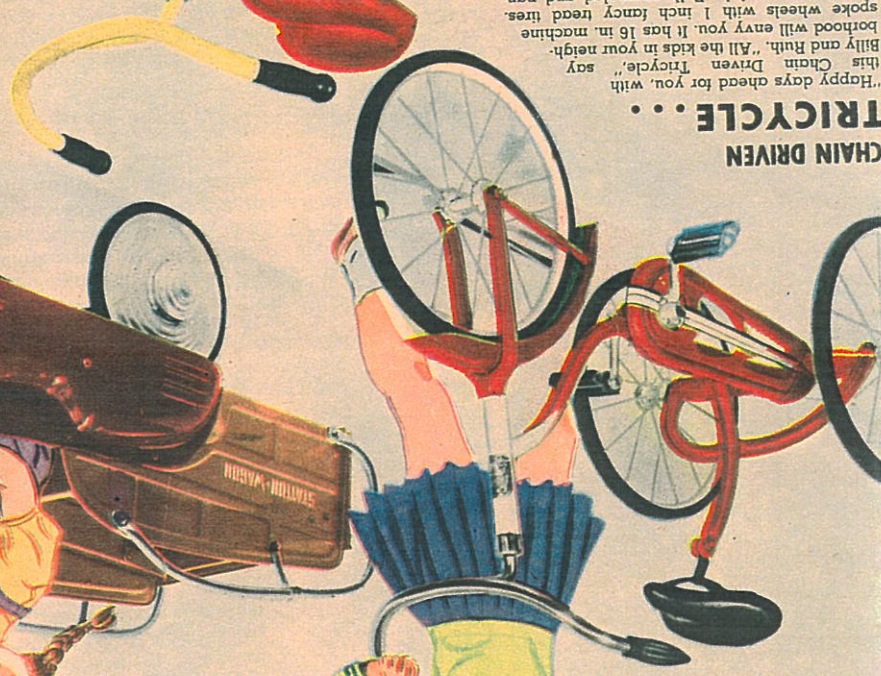
springs, Red and Green Ladders. Two-five rung ladders, ball bearing chassis, adjustable pedals, rear seat and step, hand rails. Beautiful Red baked enamel. Ivory trim. Hand rails in Silver.

ASK FOR 37BR1

VELOCIPEDE

Streamlined and smooth running! Has a nifty mudguard. Ball bearing front wheel. Big rubber tires. Adjustable saddle and handle bar. New style, block rubber pedals. Indian Red finish with Ivory trim. You'll be the talk of the town! Three sizes to pick from.

12 inch ASK FOR 37BR4
 16 inch ASK FOR 37BR5
 20 inch ASK FOR 37BR6



A NEW NOTE IN FINE MUSICAL TOYS

Can't you just see those chubby fingers as they move across the keys? Just maddes joyment. Fun-ished in a brilliant red and has clear sound tones.

ASK FOR 38BR7



What grand fun kids play on this lovely Baby Grand Piano. It is easy to play and instructive, too.

ASK FOR 38BR8



200

100

It is all metal, size 18" by 6 1/4" by 6 1/4". 12 lettered gold finished tone bars, mounted on felt base. Has 3 ml. instruction sheet, music stand, music, lyre shaped.

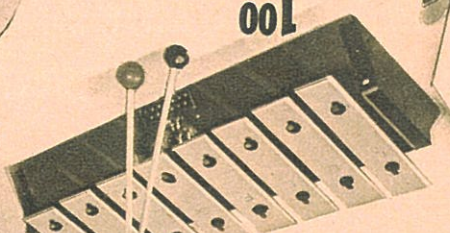
ASK FOR 38BR1



300

All metal, size 13" by 5 1/2" by 3". Contains 8 lettered tone bars, 2 ml. book of music, one instruction sheet for playing.

ASK FOR 38BR2



100

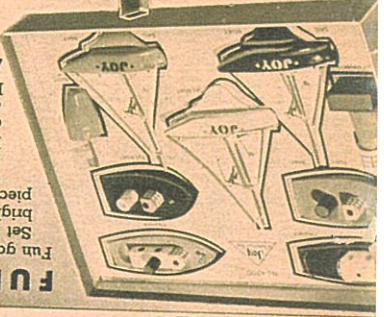
CLIMBING TRACTOR
Always a hit! Watch it climb sleep grades and run over obstacles. Man in seat and hook at rear end to pull loads. Has saw-grip handles and endless rubber tread.

ASK FOR 38BR3 29c



Fun galore with this Boat Set. There are 9 brightly colored wood pieces—Cruiser, Cabin Cruiser, three Sails Boat, three Tug Boats with picture of sailor printed on sails. Light House and Buoy.

ASK FOR 38BR4 100



MINIATURE VILLAGE

"Here's your chance to own the whole town," says Billy, "This set makes a complete town consisting of a large Business Building, School, Church, Fire Station, Drug Store, Union Station and six Houses, all of which are different."

ASK FOR 38BR5 100

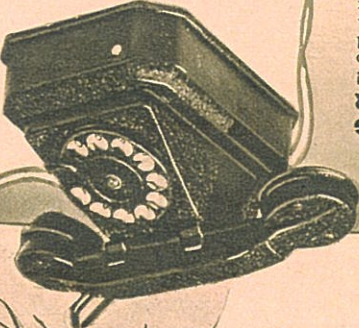


CALL UP YOUR CHUMS IN THE HOUSE ACROSS THE WAY!

"This phone set is a lot of fun, and practical, too," Billy and Ruth tell us. "You see, not only can they be hooked up from house to house, but you can talk to your friends, but and hooked up downstairs. Just is a sick member in the house. Why, phones as a gift." Phones operate on ordinary flashlight batteries. Fifty feet of wire is supplied with each set.

ASK FOR 38BR6

300



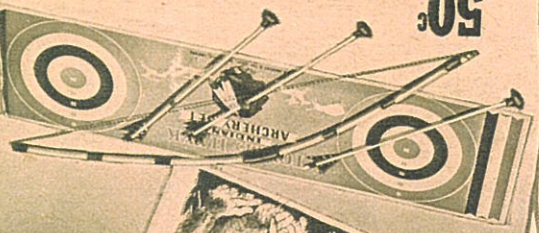
NIFTY TELEPHONE SET

CALL UP YOUR CHUMS IN THE HOUSE ACROSS THE WAY!

"Fun? You bet. Stand back—take aim—let'er go! A perfect hit, we hope," says Billy and Ruth. Consists of a double target board, a big bow and 3 arrows, with vacuum rubber tips.

ASK FOR 38BR10

50c



DICTIONARY

Latest Webster Edition. Your name put on it. Send 10 cents in Coin or Stamps to Billy & Ruth.

